



UCO

VISTABORD

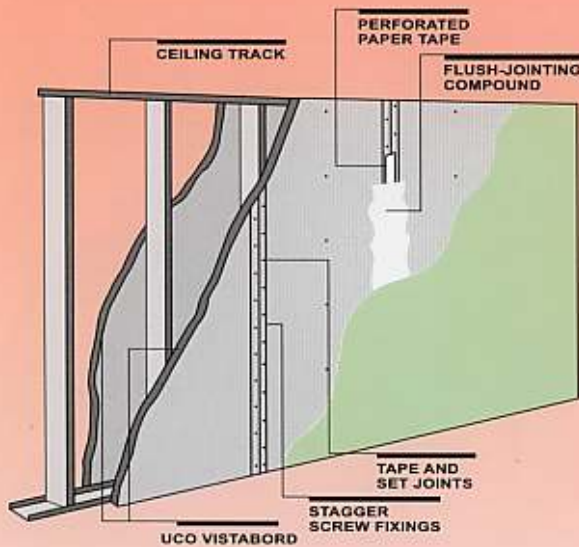
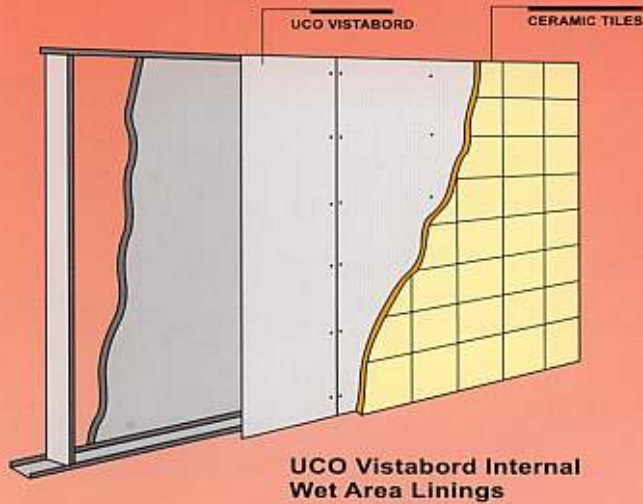
UCO Vistabord Internal Ceilings

UCO Vistabord Internal Wet Area Linings

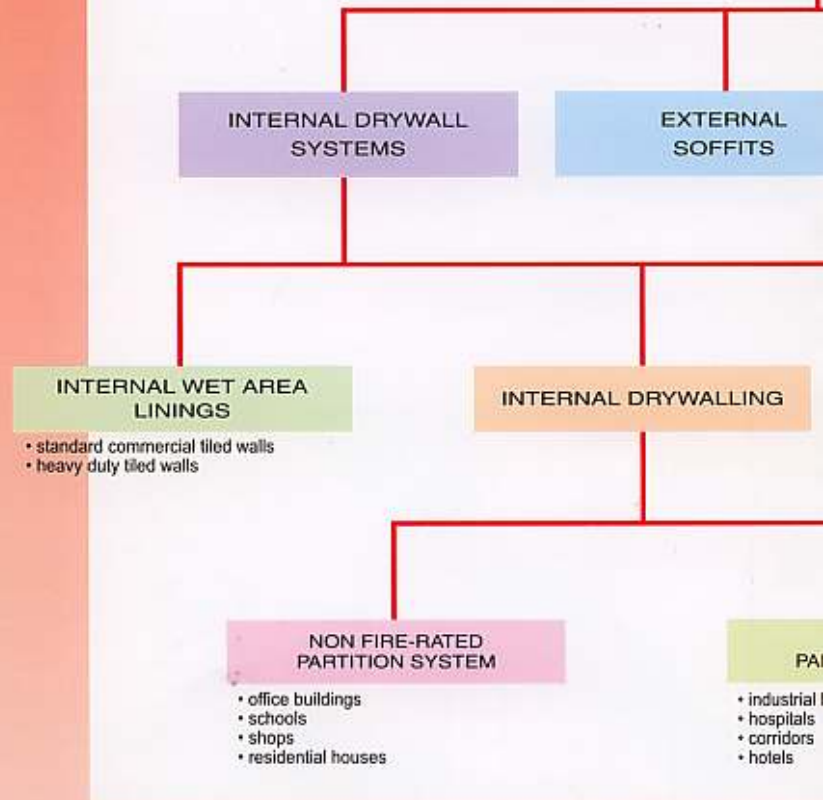
UCO Vistabord Internal Drywall Systems



UCO VISTABORD is a sanded smooth surfaced asbestos-free fibre reinforced cement board with recessed edges. The unsanded surface equivalent, UCO FLEXABORD can also be manufactured. UCO Vistabord is the ultimate flush-jointable board, developed to create a homogeneous seamless joint that can be tiled-on. This board is also available with straight edges, UCO MULTIFLEX.



UCO VISTABORD APPLICATIONS



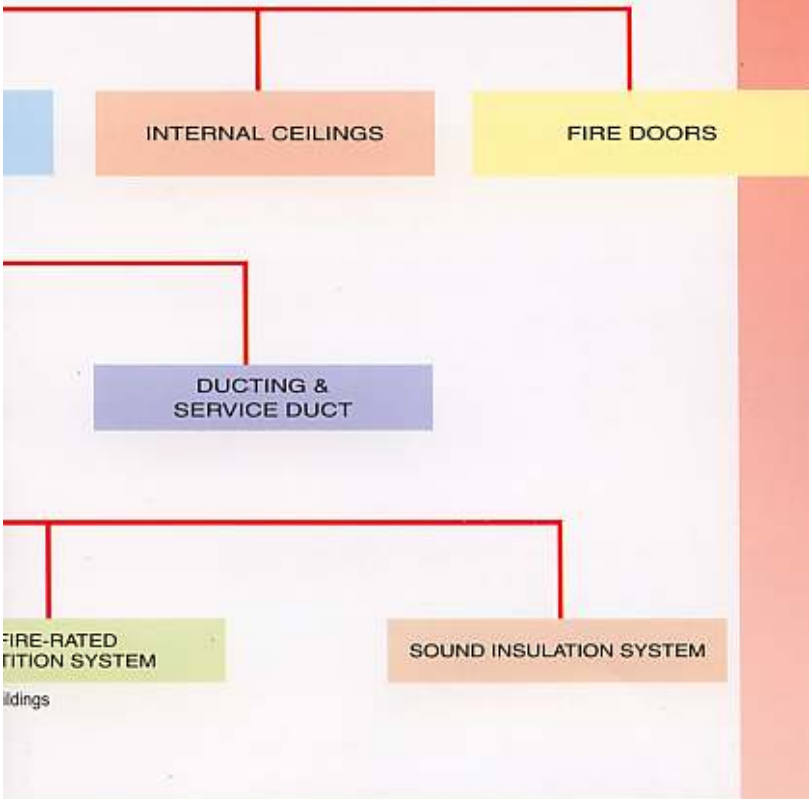
ADVANTAGES

- ✓ **LIGHTWEIGHT**
Reduces weight of walls by approximately 70% compared with brick walls.

ABORD



UCO MULTIFLEX APPLICATIONS

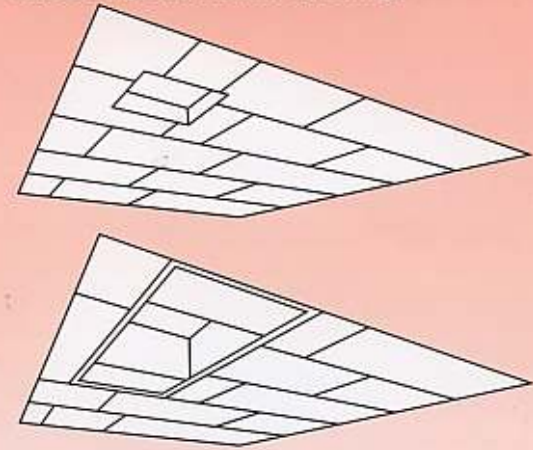


- ✓ **WATER-RESISTANT**
Excellent for wet areas and tile-on applications.
- ✓ **FIRE-RESISTANT**
Class 'O' classification according to Uniform Building By-Laws 1984 and also available in fire-rated system.
- ✓ **TERMITE-FREE**
Not affected by attacks by vermin, termites or other insects.
- ✓ **SOUND-INSULATED**
Sound Transmission Class (STC) rating of 45dB for a 6.0 mm thick board.

UCO Vistabord Internal Ceilings



Sheet Layout Around Openings



UCO Vistabord External Soffits



- ✓ **IMPACT / ABRASION-RESISTANT**
Scuff-resistant, offering superior impact and abrasion resistance.
- ✓ **FINISH VERSATILE**
Can accept a variety of finishes, including paint, texture coating, tiles and wallpaper.
- ✓ **RAPID INSTALLATION**
Easily and rapidly constructed, cutting down construction time and cost compared to the wet trade.
- ✓ **DRY CONSTRUCTION**
Reduces messiness and therefore clean-up at site. Also minimises inconvenience to other trades compared to the labour-intensive wet trade.
- ✓ **DURABLE**
Immune to permanent water damage and impervious to high humidity/moisture. Also does not warp, crack or split easily.

PRODUCT CHARACTERISTICS

BASIC COMPOSITION

UCO Vistabord is manufactured from specially treated cellulose fibre, Portland cement and refined sand.

FIRE RESISTANCE

UCO Vistabord conforms to the following:

- a. Uniform Building By-Laws 1984 Class 'O'
- b. BS 476 Part 6 (fire propagation)

Fire Propagation Index, I	= 0.1 to 0.2
Sub-index i. 1	= 0.0
i. 2	= 0.0
i. 3	= 0.1 to 0.2
- c. BS 476 Part 7 (surface spread of flame)
Class (1) - No flame spread

DENSITY (oven dry)

6.0mm & 9.0mm - 1.38g/cc

MOISTURE CONTENT AT EQUILIBRIUM

EMC 8%

MOISTURE MOVEMENT

EMC to saturated 0.06%
EMC to oven dry 0.12%

WATER ABSORPTION

BY weight 30%

THERMAL CONDUCTIVITY

Estimated At 25° C 0.47W/mk

THERMAL EXPANSION COEFFICIENT

Estimated 7.5 X 10⁻⁶

SOUND TRANSMISSION LOSS

Estimated 6.0mm - 25dB
9.0mm - 28dB

FLEXURAL STRENGTH (MOR)

EMC average 17 MPa
Saturated average 12 MPa

DIMENSIONS

Thickness 6.0 mm, 7.5*mm, 9.0mm
and 12.0* mm

Length 2440mm, 2745* mm and 3050* mm

Width 1220 mm

* Subject to stock availability and economic production run

ACCESSORIES

Screws

For 6.0 mm thick board fixed onto light gauge steel framing (less than 1.0 mm thick), use Streaker no. 8 self-embedding head screws:
25 mm long for single-layer applications
45 mm long for double-layer applications
Above 6.0 mm thick board fixed onto steel framing (thickness: minimum 1.0 mm & maximum 1.6 mm), use Wing-tip self-embedding Teks screws:
30 mm long for single-layer applications
40 mm long for double-layer applications

Expansion Joints

Rondo 33 Expansion Joint Kit is recommended for flush jointing to cater for board movement.

Steel Framing

Framing sections shall be galvanised or zinc-coated with a minimum base steel (BMT) of 0.55 mm, i.e. typically 0.6 mm coating thickness.

Flush-Jointing Compound

For wet area applications, a cementitious jointing compound should be used. Our technical personnel should be consulted for assistance to ensure the right material is used.

Corner Beading

To flush external corners, use perforated metal corner beads over the corner sheet edge before fixing with screws or clouts. In wet area applications, use perforated plastic corner beads.

Joint Reinforcing Tape

Perforated paper reinforcing tapes are recommended for flush setting of joints to achieve good results. Woven-linen and self-adhesive tapes must not be used.

LIMITATIONS OF FLUSH JOINTED WALLS

Flush jointing is not recommended for sheets fixed directly to purlin or girts as these members are usually subject to the thermal and structural movement beyond the capacity of a flush joint.

WARRANTY

The recommendations in this brochure are formulated along the lines of good building practice. However, this brochure is not intended to be an exhaustive statement of all relevant data.

As the success of building projects depends on many factors outside UAC's control (e.g. quality of workmanship, particular design detail requirements etc.), UAC accepts no responsibility or liability for or in connection with the quality of the projects or their suitability when completed.

For a warranty period of one year from date of delivery of UAC's products ("UAC Products") to the purchaser ("Warranty Period"), UAC warrants that the UAC Products are free from defects which are solely due to materials or manufacturing faults. The foregoing warranty shall not apply to the extent that:

- (a) the defect, loss or damage is caused by any act, default or misuse of the UAC Products (or part thereof) by the purchaser or any third party or by failure to follow any instructions or specifications of UAC or by modification of the UAC Products or installation, application and/or combination of the UAC Products with any other product not approved by UAC; or
- (b) UAC is not notified in writing within the Warranty Period of any relevant defect in the UAC Products or part thereof.

Subject to such provisos, UAC will at its sole option and subject to the investigations, verifications and inspection of such defect by a UAC representative, either (a) replace such defective UAC Product or part thereof; or (b) re-fund the price paid for the defective UAC Product or part thereof. The liability of UAC shall include only Products with antecedent defects. The liability cannot be extended to include Products without defects which might have been delivered at the same time as the defective Products. The foregoing shall be the sole and exclusive remedy in the event of any breach of the said warranty.

To the greatest extent permitted by any applicable law, the warranties referred to the above shall be sole and exclusive and in lieu of all implied or statutory warranties (including without limitation, the implied warranties imposed by the Malaysian Sale of Goods Act 1957 and all other warranties implied by law as to merchantability, satisfactory quality or fitness for a particular purpose, or otherwise arising from course of dealing or usage of trade) or any other express or implied warranties or representations.

To the greatest extent permitted by any applicable law, in no event shall UAC be liable to the purchaser or any other person or entity for any loss or damage including without limitation special, indirect, incidental, punitive, exemplary, or consequential damages, loss of profits, loss of business or loss of use; whether based upon contract, tort, negligence or otherwise arising out of the manufacture, sale or delivery of the UAC Products, even if UAC has been advised of the possibility of such damage or loss.



UAC BERHAD

3rd Floor, Menara Boustead, 69 Jalan Raja Chulan,
50200 Kuala Lumpur, P.O. Box 12266, 50772 Kuala Lumpur.
Tel: 603-2141 2266 Fax: 603-2141 5160 Email: sales@uac.com.my
Web site: www.uac.com.my



5149H



CERTIFIED TO MS ISO 9001:2000
Registration No. AR 0387